

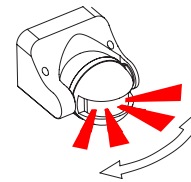


## TLI-MS03

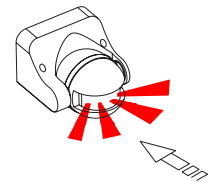
### INFRARED MOTION SENSOR

#### SPECIFICATION

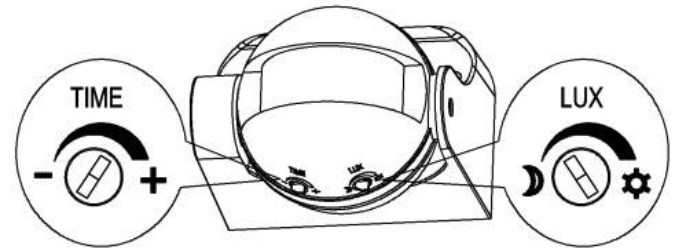
Power Source	220-240V/AC
Power Frequency	50/60Hz
Ambient Light	<3-2000LUX (adjustable)
Time Delay	Min.10sec±3sec Max.7min±2min
Rated Load	Max.1200W/300W
Detection Range	180°
Detection Distance	12m max(<24 °C)
Working Temperature	-20~+40 °C
Working Humidity	<93%RH
Power Consumption	approx 0.5W
Installation Height	1.8-2.5m
Detection Moving Speed	0.6-1.5m/s
Ingress Protection (IP Rating)	IP44



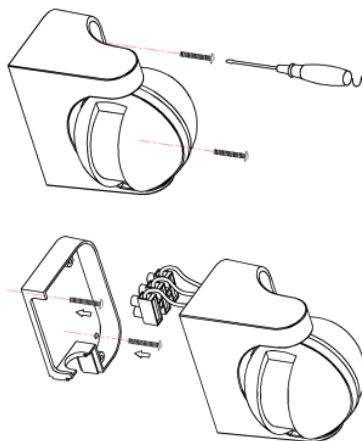
Good Sensitivity



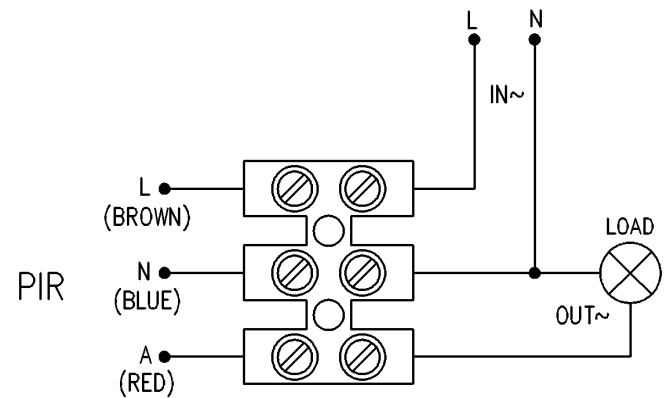
Poor Sensitivity



#### INSTALLATION DIAGRAM



#### CONNECTION WIRE DIAGRAM



#### DATA SHEET

CODE	INPUT VOLTAGE	DIMENSION	Installation Height	Detection Distance	Moving Speed
TLI-MS03	AC220-240V	92x85x60 mm	1.8-2.5m	12m max(<24 °C)	0.6/1.5(m/s)